

# **S.L.P. INDUSTRIES** **BRINGING LIFE TO** **EVERY WALL**



**EXPERT PAINTING SOLUTIONS FOR YOUR PERFECT SPACE**



**CONFIDENCE THAT INSPIRES**

# EXCLUSIVE PAINT SOLUTIONS

EXPERTISE IN PAINT SOLUTIONS REFERRING TO THE VARIOUS TYPES OF PAINTS AND COATINGS USED TO DECORATE AND PROTECT THE INTERIORS AND EXTERIORS OF HOMES. THESE SOLUTIONS ENCOMPASS A WIDE RANGE OF PRODUCTS, INCLUDING OIL-BASED AND WATER-BASED PAINTS, WITH DIFFERENT FINISHES AND APPLICATIONS.



CONFIDENCE THAT INSPIRES

## OUR SERVICES :



Domestic  
Paint Solutions



Industrial Paint  
Solutions



Color  
Consultation



# HISTORY SINCE 1997

SLP INDUSTRIES WAS FOUNDED IN 1997 BY THE LATE SOURENDRA SAKHER MONDAL AND HIS BROTHERS WITH A VISION TO DELIVER HIGH QUALITY AFFORDABLE PAINT COATINGS FOR BOTH DOMESTIC AND INDUSTRIAL USE.

SINCE ITS INCEPTION, THE COMPANY HAS FOCUSED ON MAINTAINING RIGOROUS QUALITY STANDARDS WHILE ENSURING COST EFFECTIVENESS FOR CUSTOMERS



**CONFIDENCE THAT INSPIRES**



## OUR SERVICES :



Domestic  
Paint Solutions



Industrial Paint  
Solutions



Color  
Consultation



# ABOUT US

WE WEATHERED MANY STORMS OVER THE YEARS, YET WE'VE ALWAYS HELD OUR HEAD HIGH. OUR GREATEST STRENGTH LIES IN OUR NEVER-SAY-DIE ATTITUDE, UNWAVERING FAITH, AND COMMITMENT TO HONESTY.

BACKED BY A DEDICATED AND HIGHLY EXPERIENCED TEAM, WE PRIDE OURSELVES ON WORKING TIRELESSLY TO ENSURE TIMELY DELIVERY AND TOP-NOTCH QUALITY IN EVERY PRODUCT WE OFFER. IT'S THIS RESILIENCE AND WORK ETHIC THAT CONTINUES TO DRIVE OUR SUCCESS AND SUSTAIN OUR LEGACY.



**CONFIDENCE THAT INSPIRES**



## Our Service:



# MISSION

TO CONSISTENTLY DELIVER HIGH-QUALITY, INNOVATIVE, AND AFFORDABLE PAINTING SOLUTIONS THAT CATER TO BOTH INDUSTRIAL AND DOMESTIC NEEDS.

WE AIM TO UPHOLD OUR LEGACY AS A PART OF ONE OF THE OLDEST PAINT MANUFACTURERS IN THE KOLKATA HOWRAH REGION—(KANAN PAINT WORKS)—DRIVEN BY TRUST, CRAFTSMANSHIP, AND CUSTOMER SATISFACTION.



**CONFIDENCE THAT INSPIRES**



## Our Service:



Domestic  
Paint Solutions



Industrial Paint  
Solutions



Color  
Consultation



# VISION

TO BE A PIONEER IN THE PAINT INDUSTRY BY EMBRACING INNOVATION ESPECIALLY IN WATER-BASED TECHNOLOGY AND CONTINUING TO LEAD WITH RESILIENCE AGAINST ALL CHALLENGES.

THROUGH RELENTLESS EFFORT, RESEARCH AND DEDICATION, WE ENVISION SETTING NEW BENCHMARKS IN QUALITY AND SUSTAINABILITY WHILE HONORING THE HERITAGE THAT DEFINES US.



CONFIDENCE THAT INSPIRES



## Our Service:



Domestic  
Paint Solutions



Industrial Paint  
Solutions



Color  
Consultation



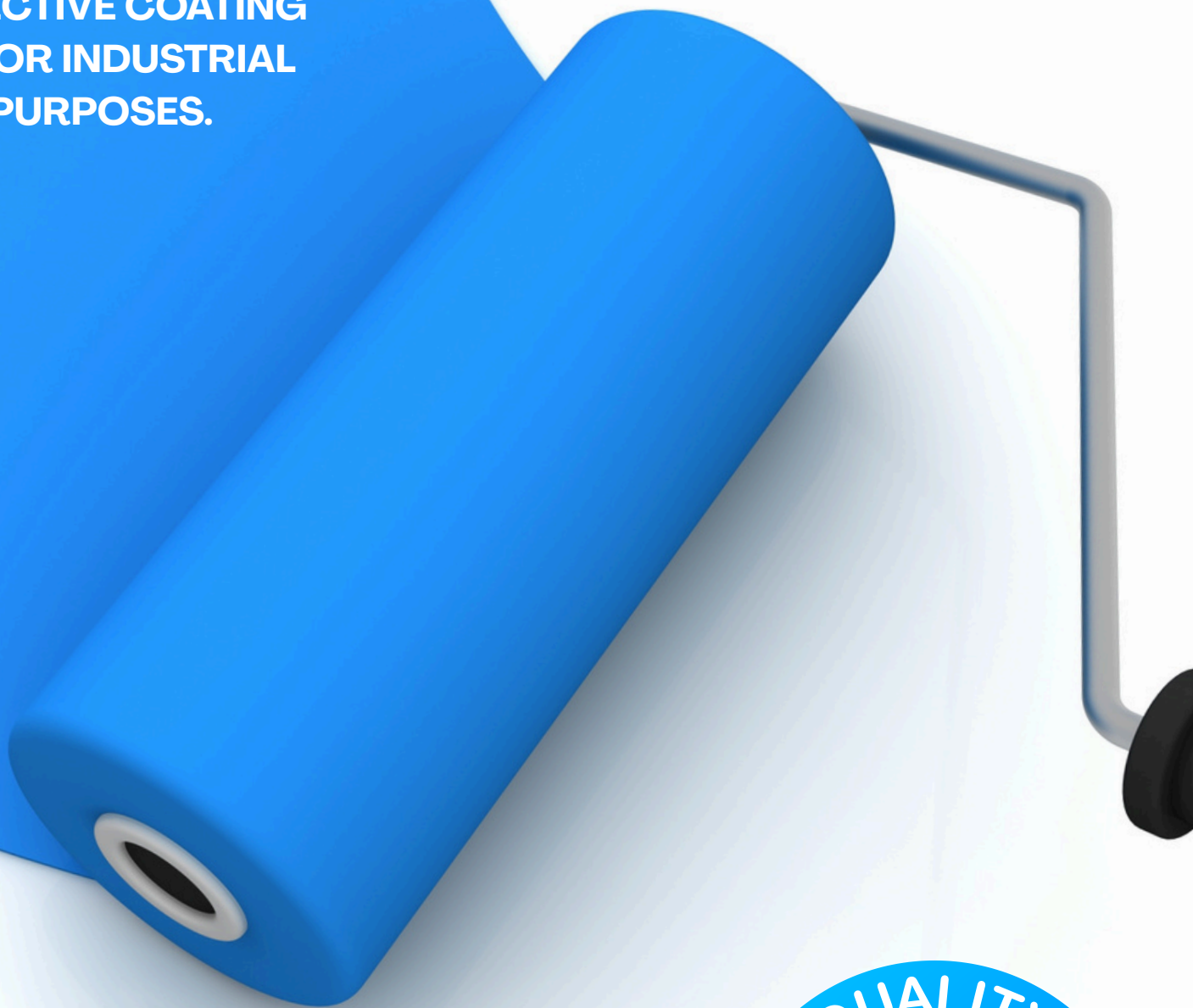
# WHY US ?

SPECIALIZED KNOWLEDGE  
VARIETY OF MATERIALS  
COST EFFECTIVE SOLUTIONS  
PROTECTION  
AESTHETICS

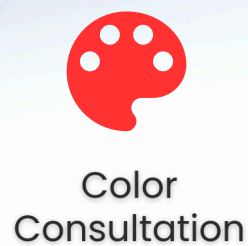
WE PROVIDE THE EXPERTISE, MATERIALS, AND PROCESSES NEEDED FOR EFFECTIVE COATING APPLICATION, WHETHER IT'S FOR INDUSTRIAL MACHINERY OR DECORATIVE PURPOSES.



CONFIDENCE THAT INSPIRES



## Our Service:



# SERVICES

HIGH GLOSS SYNTHETIC ENAMEL PAINTS

INDUSTRIAL PAINTS AND PRIMERS

(HANDPUMPS INDUSTRIES AND OTHERS  
FIELDS AS WELL)

INTERIOR AND EXTERIOR EMULSION  
PAINTS AND PRIMERS

PU AND EPOXY PAINTS PRODUCTS

BLACK JAPAN & VARNISH  
DISTEMPERS



CONFIDENCE THAT INSPIRES



## Our Service:



Domestic  
Paint Solutions



Industrial Paint  
Solutions



Color  
Consultation



# PRODUCTS

SYNTHETIC ENAMEL PAINTS  
AND PRIMERS

WASHABLE ACRYLIC DISTEMPERS

FLOOR COATINGS AND FLOOR PAINTS

WATER-BASED PRIMERS

PLASTIC EMULSION PAINTS

GLASS PUTTIES

BLACK J A P A N AND VARNISHE



CONFIDENCE THAT INSPIRES



## Our Service:



# BENEFITS OF INDUSTRIAL PAINT COATINGS

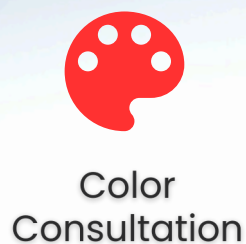
INDUSTRIAL PAINT COATING IS CRUCIAL FOR PROTECTING ASSETS AND ENSURING LONG-TERM DURABILITY IN VARIOUS INDUSTRIES. IT PROVIDES A BARRIER AGAINST CORROSION, WEAR, AND ENVIRONMENTAL FACTORS, EXTENDING THE LIFESPAN OF EQUIPMENT AND STRUCTURES. BY PREVENTING DEGRADATION, INDUSTRIAL COATINGS REDUCE MAINTENANCE COSTS, IMPROVE SAFETY, AND ENHANCE THE OVERALL EFFICIENCY OF INDUSTRIAL OPERATIONS



**CONFIDENCE THAT INSPIRES**



## Our Service:



# BENEFITS OF DOMESTIC PAINT COATINGS

DOMESTIC PAINT COATINGS ARE IMPORTANT FOR BOTH PRACTICAL AND AESTHETIC REASONS. THEY PROTECT SURFACES FROM DAMAGE, ENHANCE APPEARANCE, AND IMPROVE THE OVERALL QUALITY OF A HOME. SPECIFICALLY, PAINT COATINGS HELP PREVENT CORROSION, MOISTURE DAMAGE, WEAR AND TEAR, AND THE GROWTH OF MOLD AND MILDEW. THEY ALSO CONTRIBUTE TO A HOME'S RESALE VALUE AND CAN HELP IMPROVE INDOOR AIR QUALITY



CONFIDENCE THAT INSPIRES



## Our Service:



# PRODUCT GLIMPSES



CONFIDENCE THAT INSPIRES



## Our Service:



# PRODUCT GLIMPSES



CONFIDENCE THAT INSPIRES



## Our Service:



Domestic  
Paint Solutions



Industrial Paint  
Solutions



Color  
Consultation



# PRODUCT GLIMPSES



CONFIDENCE THAT INSPIRES



## Our Service:



# PRODUCT GLIMPSES



CONFIDENCE THAT INSPIRES



## Our Service:



# INDUSTRIAL PRODUCTS



CONFIDENCE THAT INSPIRES



## Our Service:



Domestic  
Paint Solutions



Industrial Paint  
Solutions



Color  
Consultation



# INDUSTRIAL PRODUCTS



CONFIDENCE THAT INSPIRES



## Our Service:



# INDUSTRIAL PRODUCTS



CONFIDENCE THAT INSPIRES



## Our Service:



Domestic  
Paint Solutions



Industrial Paint  
Solutions



Color  
Consultation



# INDUSTRIAL PRODUCTS



CONFIDENCE THAT INSPIRES



## Our Service:



# INDUSTRIAL HAND PUMPS PAINTING SALUTATION



CONFIDENCE THAT INSPIRES



## Our Service:



Domestic  
Paint Solutions



Industrial Paint  
Solutions

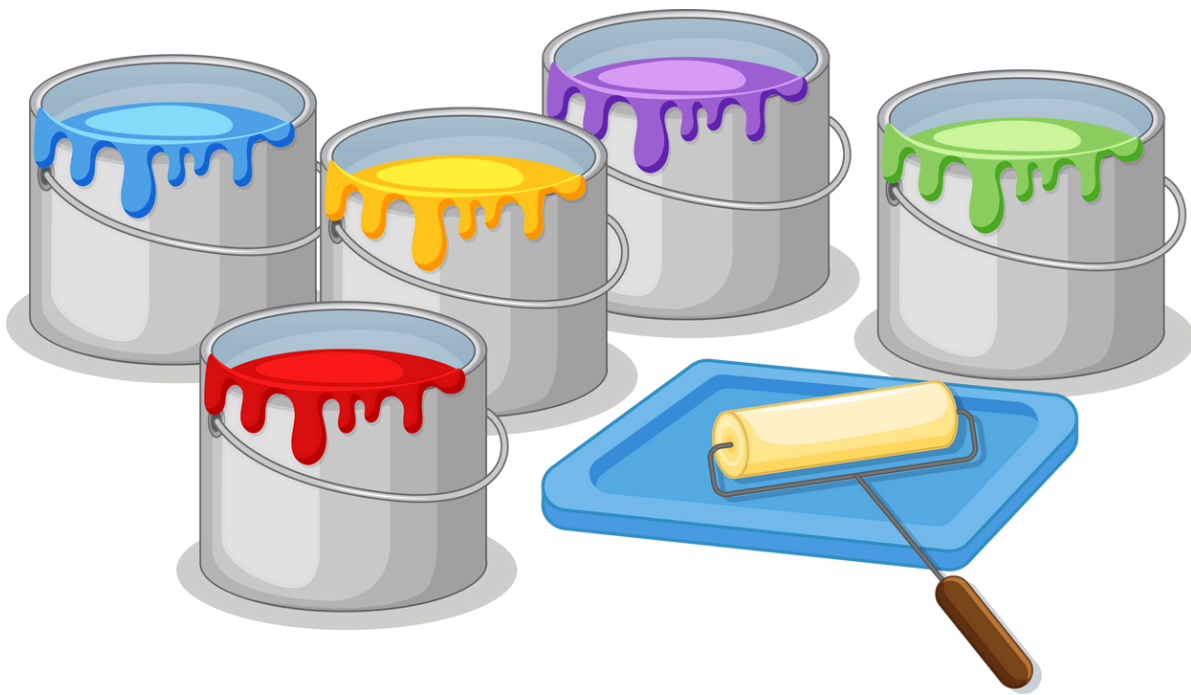


Color  
Consultation





CONFIDENCE THAT INSPIRES



S.L.P. INDUSTRIES

196 Badal Bose Sarani Chandmari road.

Howrah 700009

9051913522 / 9836730699

Email - [slpindustries98@gmail.com](mailto:slpindustries98@gmail.com)

*Thank You*



**CONFIDENCE THAT INSPIRES**



**CONFIDENCE THAT INSPIRES**